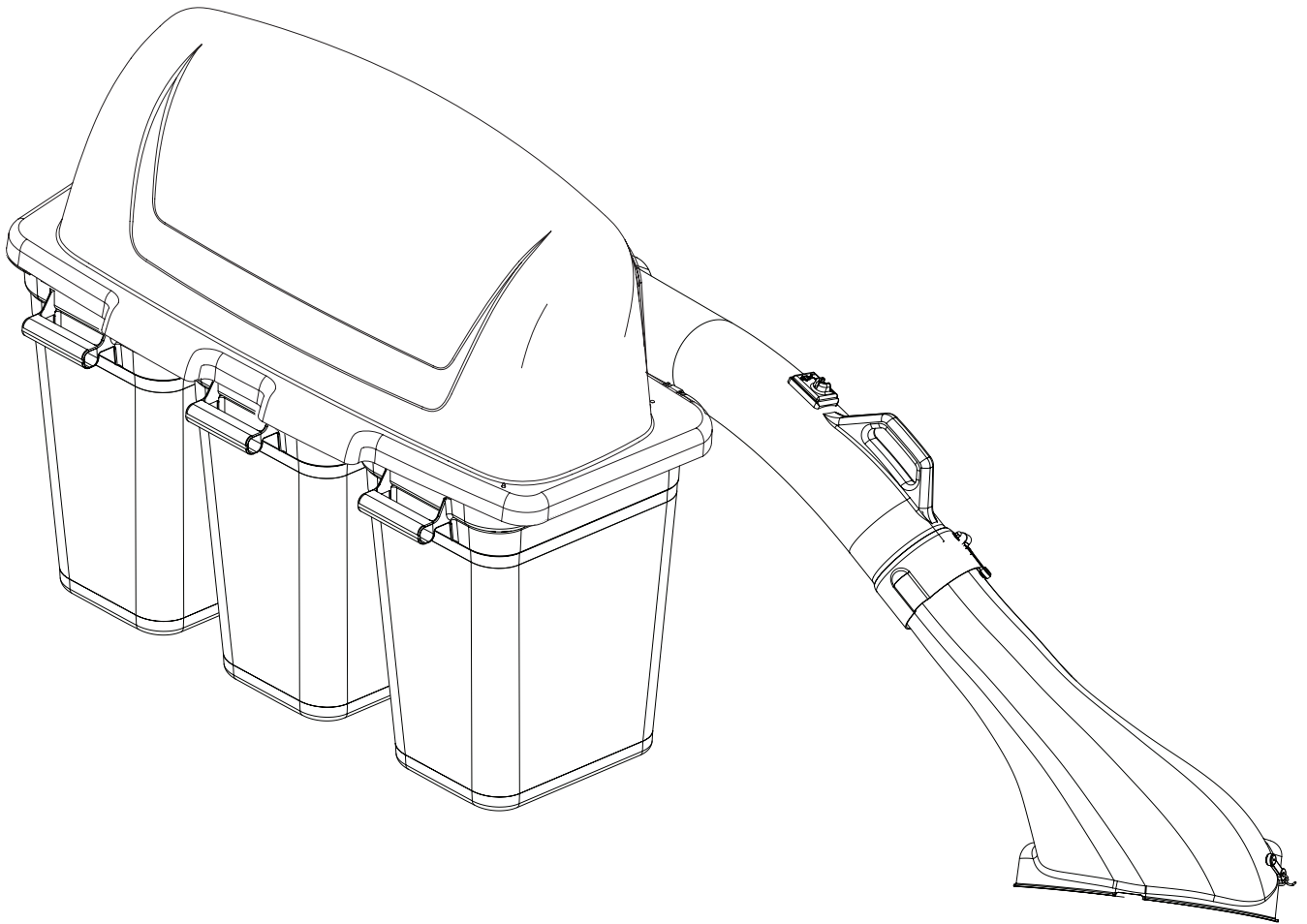


Illustrated Parts List

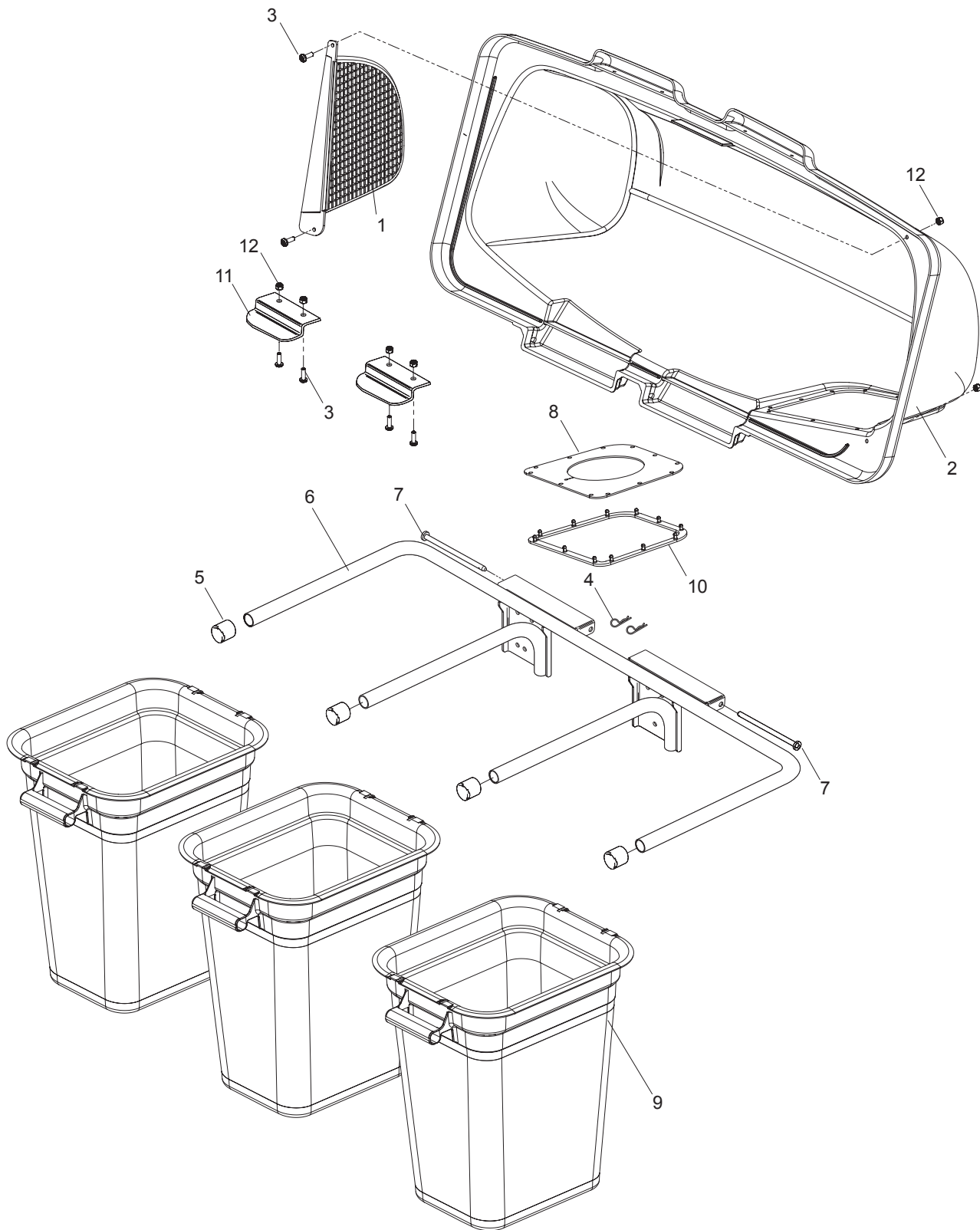


Grass Catcher

54"

Model 966 004201

PARTS

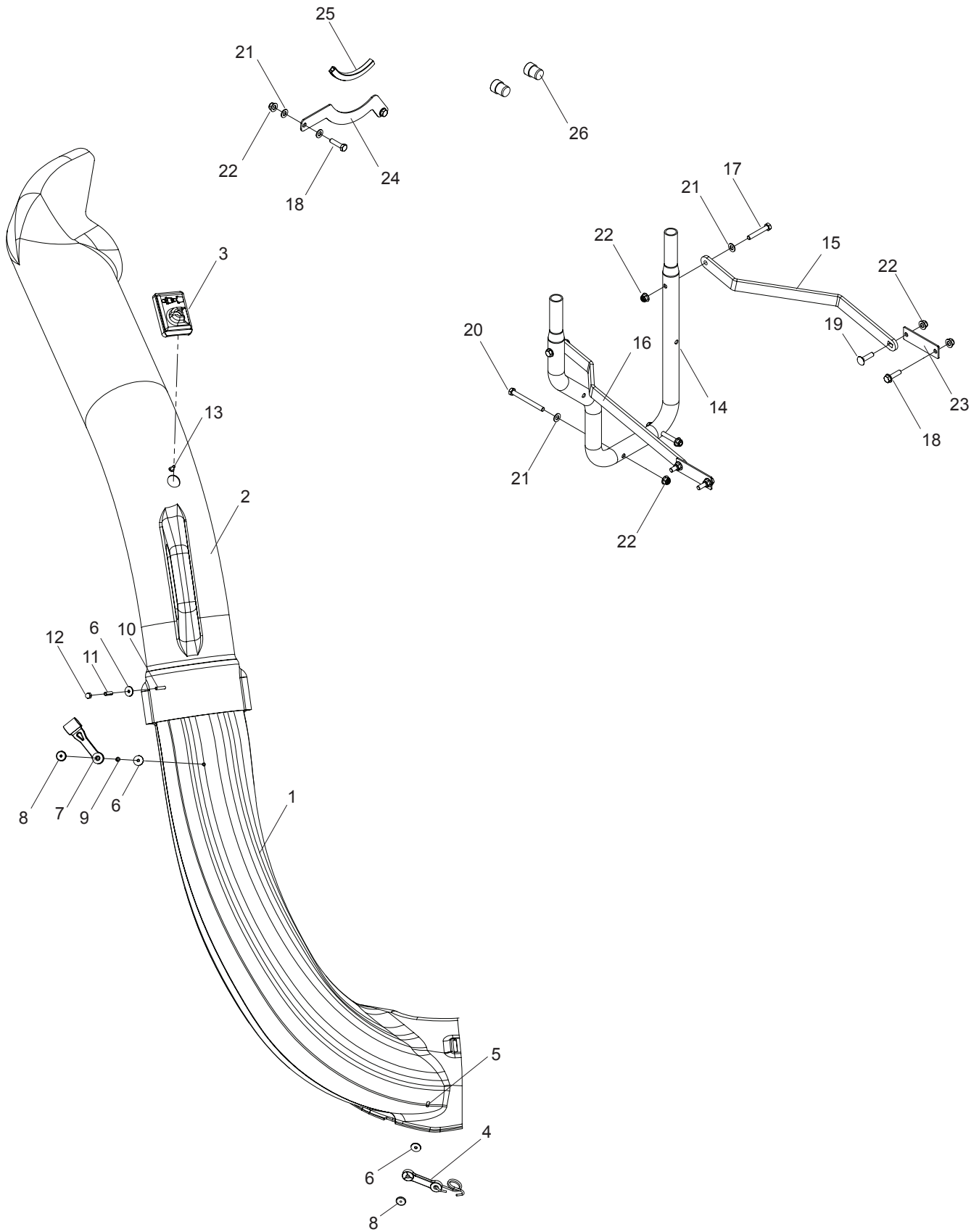


PARTS

ITEM	PART NO.	QTY.	DESCRIPTION	ITEM	PART NO.	QTY.	DESCRIPTION
1..	532 192709....	1	SCREEN, COVER	7..	532 192786....	2	PIN, HINGE
2..	532 195373....	1	COVER	8..	532 192550....	1	SEAL, COVER
3..	539 976952....	4	SCREW #10-24 x ⁵ / ₈	9..	532 400226....	3	CONTAINER, SOFT BAG
4..	539 108096....	2	HAIR PIN	10..	532 192603....	1	GASKET, COVER
5..	539 108097....	4	PLUG, TUBING END	11..	532 130895....	2	HANDLE, BAGGER COVER
6..	539 108098....	1	BAGGER, FRAME	12..	539 976977..	14	NUT #10-24 CROWNLOCK

NOTE: ALL FASTENERS ARE GRADE 5 UNLESS OTHERWISE SPECIFIED.

PARTS



PARTS

ITEM	PART NO.	QTY.	DESCRIPTION	ITEM	PART NO.	QTY.	DESCRIPTION
1..	539 1132041 CHUTE, LOWER	14..	539 1310911 TUBE MOUNT
2..	539 1081411 CHUTE, UPPER	15..	522 8545021 STRAP, SUPPORT, LT
3..	539 1080821 DUMP BAG INDICATOR	16..	522 8544021 STRAP, SUPPORT, RT
4..	539 1081942 LATCH	17..	539 9769372 HCS $\frac{5}{16}$ -18 x 2
5..	539 9769523 SCREW #10-24 x $\frac{5}{8}$	18..	539 9906274 HCS $\frac{5}{16}$ -18 x $1\frac{1}{4}$
6..	539 1080844 WASHER $\frac{3}{16}$ x $\frac{3}{4}$ 16GA	19..	539 1104722 RHSNB $\frac{5}{16}$ -18 x $1\frac{1}{4}$
7..	539 1080881 LATCH, HOOD	20..	539 1015202 HCS $\frac{5}{16}$ -18 x $3\frac{1}{4}$
8..	539 1080893 PLATED, WELD NUT	21..	539 990188	..10 WASHER $\frac{5}{16}$ SAE
9..	539 1095521 LOCKWASHER $\frac{3}{16}$	22..	539 112899	..10 NUT $\frac{5}{16}$ -18 FLANGE NYLOC
10..	539 1080831 SCREW #10-24 x $1\frac{1}{8}$	23..	523 1128022 REINFORCE PLATE
11..	539 1080851 SPACER, SPLIT	24..	539 1102811 SUPPORT, CHUTE
12..	539 1080861 NUT, ACORN #10-24	25..	539 1122941 FLEX TRIM
13..	539 1080811 SCREW #10-14 x $\frac{1}{2}$	26..	522 8013012 SPACER PLUG

NOTE: ALL FASTENERS ARE GRADE 5 UNLESS OTHERWISE SPECIFIED.

TORQUE CHART

TORQUE SPECIFICATIONS HEX HEAD CAP SCREWS

The torque values shown should be used as a general guideline when specific torque values are not given.

U.S. Standard Hardware

Grade	SAE grade 5		SAE grade 8		Flangelock Screw w/ Flangelock Nut		
	ft./lbs	Nm	ft./lbs	Nm	ft./lbs	Nm	
Shank Size (Diameter in inches, fine or coarse thread)	1/4	9	12	13	18		
	5/16	18	24	28	38	24	33
	3/8	31	42	46	62	40	54
	7/16	50	68	75	108		
	1/2	75	102	115	156		
	9/16	110	150	165	224		
	5/8	150	203	225	305		
	3/4	250	339	370	502		
	7/8	378	513	591	801		
	1	583	790	893	1211		
	1 1/8	782	1060	1410	1912		

** Grade 5 - Minimum commercial quality (Lower quality not recommended)

Metric Standard Hardware

Grade	Grade 8.8 8.8		Grade 10.9 10.9		Grade 12.9 12.9		
	ft./lbs	Nm	ft./lbs	Nm	ft./lbs	Nm	
Shank Size (Diameter in millimeters, fine or coarse thread)	M4	1.5	2	2.2	3	2.7	3.6
	M5	3	4	4.5	6	5.2	7
	M6	5.2	7	7.5	10	8.2	11
	M7	8.2	11	12	16	15	20
	M8	13.5	18	18.8	25	21.8	29
	M10	24	32	35.2	47	43.5	58
	M12	43.5	58	62.2	83	75	100
	M14	70.5	94	100	133	119	159
	M16	108	144	147	196	176	235
	M18	142	190	202	269	242	323
	M20	195	260	275	366	330	440
	M22	276	368	390	520	471	628
	M24	353	470	498	664	596	794
	M27	530	707	474	996	904	1205

